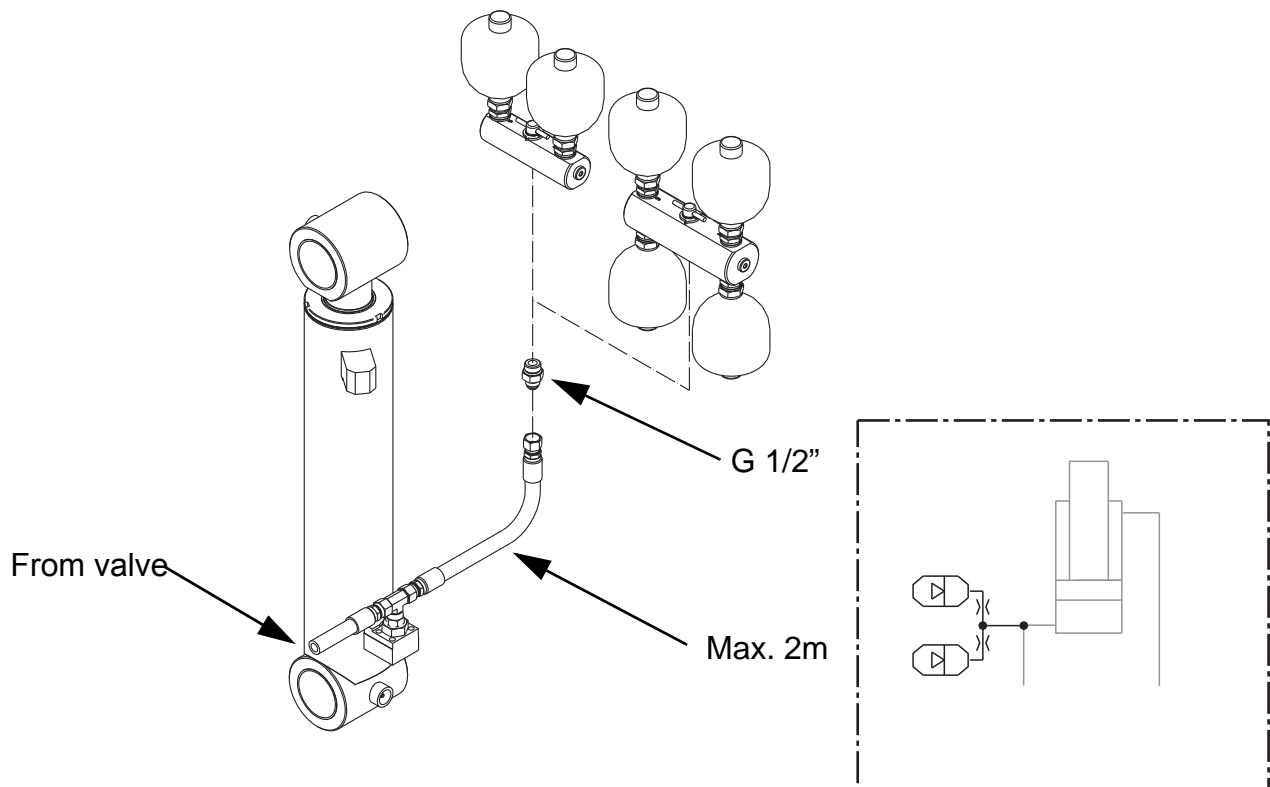


Damper

Installation instructions





Placement

Mount the damper in proximity of the hydraulic cylinder.

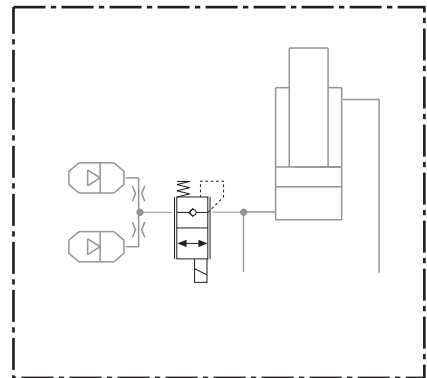
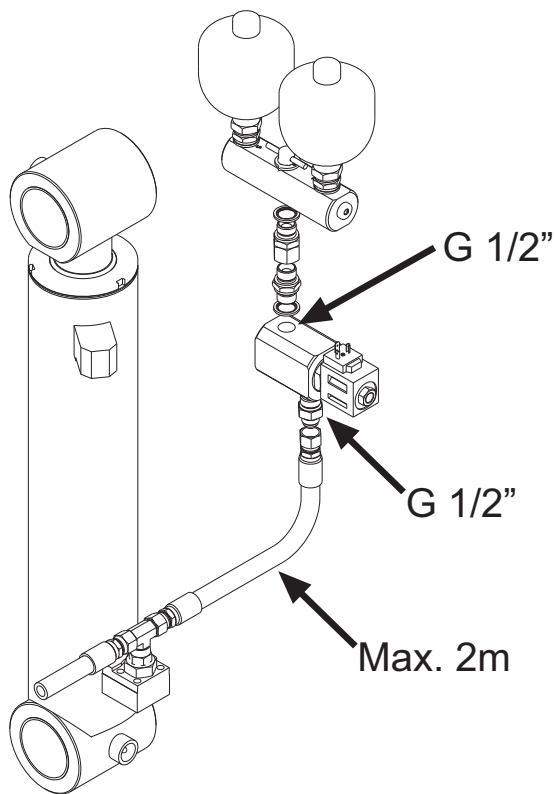
Alternatively, the damper can be placed in proximity of the hydraulic valve.

NOTE: The damper should be mounted so that the hydraulic hoses are as short as possible, preferably less than 2 meters.

Requirement of hydraulic system

The operation of the damper equipment can be compromised if a throttle is installed between the damper and the hydraulic cylinder.

Relocate such throttles closer to the hydraulic valve, if possible.



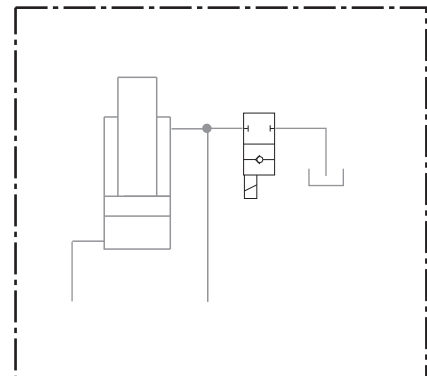
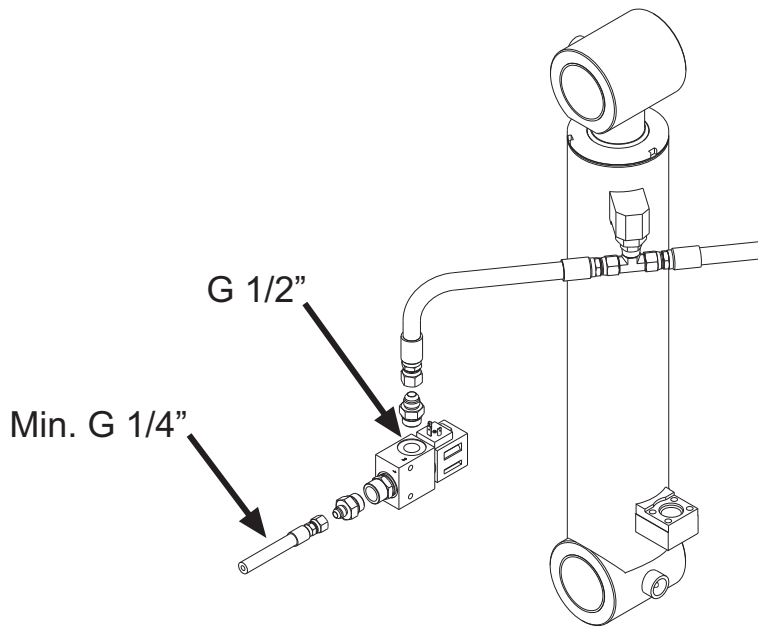
Description

The electronic shut off valve is designed specifically for use together with the damper equipment. The valve reduces pressure shocks that commonly occur in the hydraulic system during switching the damper on and off.

Mounting

The shut off valve should be mounted between the damper and the hydraulic cylinder. It can be advantageous to mount directly to the damper.

The shut off valve should be located so that the hose length between the damper and hydraulic cylinder does not exceed 2 meters.



Description

The electronic floating valve is specifically for use together with the damper equipment.

The valve removes pressure that occurs on the negative side of the hydraulic cylinder and concurrently improves the operation of the damper equipment.

Mounting

The floating valve should be mounted with a T adaptor between the hydraulic cylinders' negative side and existing tank line in the hydraulic system.